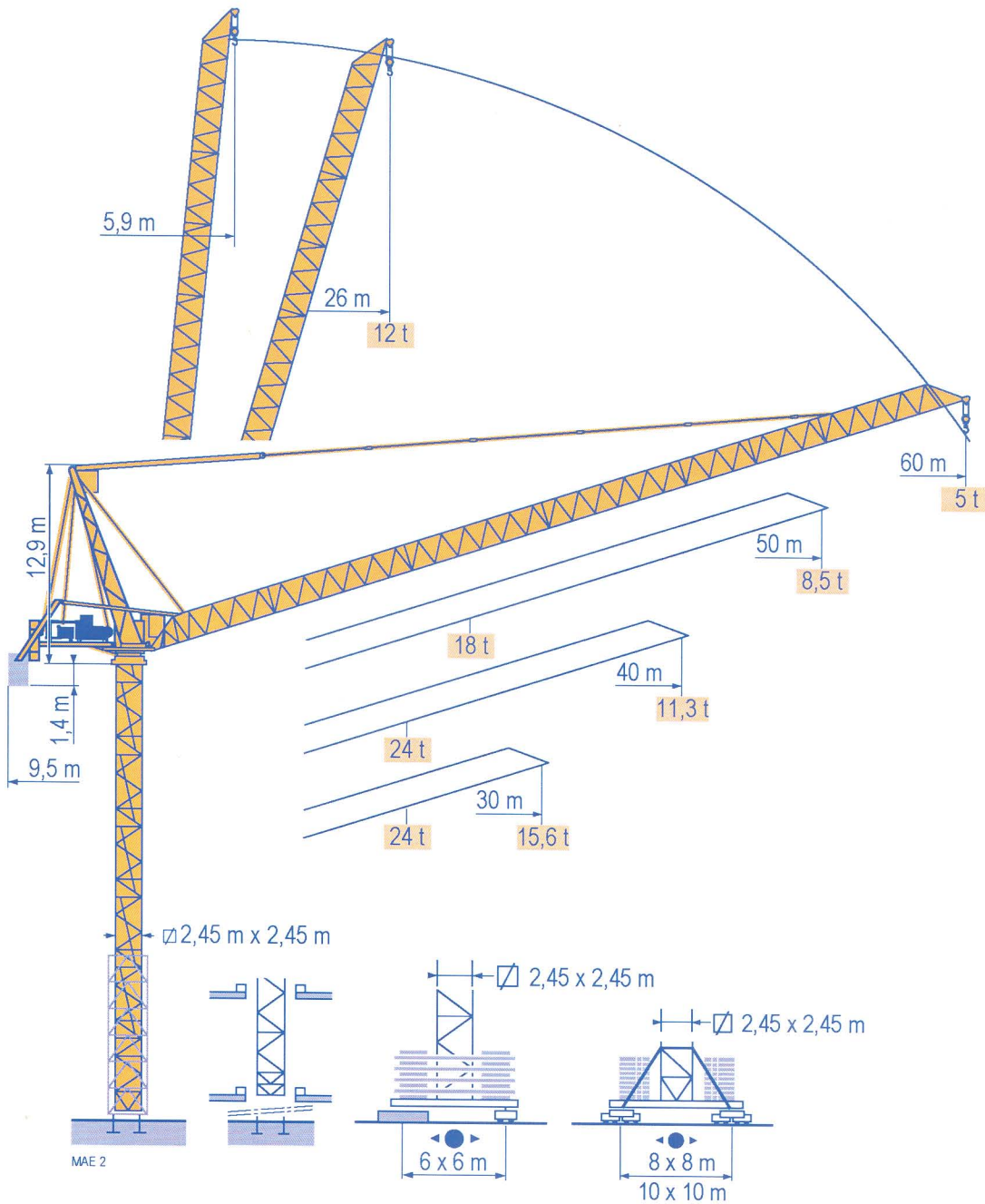
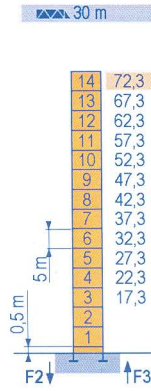


MR 415 H24



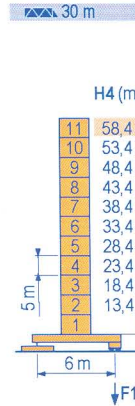
Mat / Reactions \square 2,45 m
 Maste /
 Eckdrücke 30 m \Rightarrow 60 m
 Masts /
 Reactions
 Mástil /
 Reacciones
 Torre / Reazioni
 Tramo /
 Reações

MAE 4



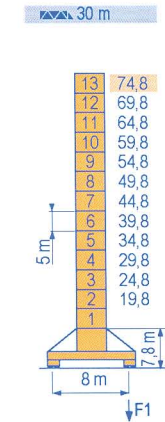
H (m)	5 m	3,33 m
30 m	14	-
40 m	12	2
50 m	11	2
60 m	10	2

P 800 A
 F2 ● 227 t
 ■ 360 t
 F3 ● 153 t
 ■ 292 t
 ▲ 104 t



H4 (m)	H3 (m)	5 m	3,33 m
30 m	58,4	11	-
40 m	53,4	10	-
50 m	51,7	9	1
60 m	48,4	9	1

ZX 6830
 F1 ● 147 t
 ■ 177 t
 ▲ 106 t



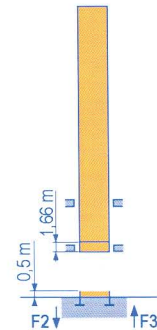
H (m)	5 m	3,33 m
30 m	13	-
40 m	12	-
50 m	10	2
60 m	9	2

Y 800 A
 F1 ● 160 t
 ■ 202 t
 ▲ 138 t

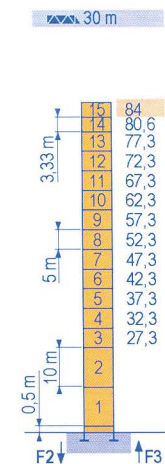
ZX 6830



\square 2,45 m
 30 m \Rightarrow 60 m

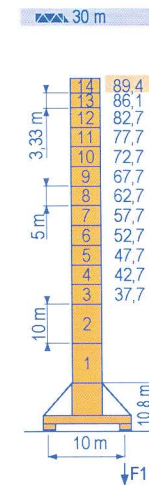


B 800 B
 i



H (m)	10 m	5 m	3,33 m
30 m	84	2	11 2
40 m	80,6	2	11 1
50 m	75,6	2	10 1
60 m	70,6	2	9 1

P 850 A
 F2 ● 274 t
 ■ 505 t
 F3 ● 184 t
 ■ 423 t
 ▲ 120 t



H (m)	10 m	5 m	3,33 m
30 m	89,4	2	10 2
40 m	86,1	2	10 1
50 m	82,7	2	10 -
60 m	79,4	2	8 2

J 850 A
 F1 ● 172 t
 ■ 252 t
 ▲ 173 t

MR 415 H24

POTAIN

F

● Réactions en service
 ■ Réactions hors service
 ▲ A vide sans lest (ni train de transport) avec flèche et hauteur maximum.

D

● Reaktionskräfte in Betrieb
 ■ Reaktionskräfte außer Betrieb
 ▲ Ohne Last, Ballast (und Transportachse), mit Maximalausleger und Maximalhöhe.

GB

● Reactions in service
 ■ Reactions out of service
 ▲ Without load, ballast (or transport axes), with maximum jib and maximum height.

E

● Reacciones en servicio
 ■ Reacciones fuera de servicio
 ▲ Sin carga, sin lastre, (ni tren de transporte), flecha y altura máxima.

I

● Reazioni in servizio
 ■ Reazioni fuori servizio
 ▲ A vuoto, senza zavorra (ne assali di trasporto) con braccio massimo e altezza massima.

P

● Reações em serviço
 ■ Reações fora de serviço
 ▲ Sem carga (nem trem de transporte)- sem lastro com lança e altura máximas.

i

Nous consulter

Auf Anfrage

Consult us

Consultamos

Consultateci

Consultar-nos


Mécanismes
Antriebe
Mechanisms
Mecanismos
Meccanismi
Mecanismos

MAE 4

MR 415 H24 - 50 Hz										ch - PS hp	kW		
▲ ▼	180 LBR 120	m/min	5,3/53	8,4/84	13,5/135	21,4/214	2,6/26	4,2/42	6,7/67	10,7/107	180	132	580 m
	L 580	t	12	7,3	4,3	2,35	24	15	8,9	5			
▶	124 VBR	tr/min U/min - rpm	1 min 31 s								125	90	
⊙	R - 8,8	m/min	0 → 0,67								2 x 6	2 x 4,4	
◀▶	Y 800 A	RT 584 A1 - 2V	13,5 - 27								8 x 7	8 x 5,2	
⬆	J 850 A	i											
◀▶	ZX 6830	RT 664 A2B - 2V	16 - 32								6 x 7	6 x 5,2	
CEI 38 IEC 38		400 V (+6% -10%)		kVA		300 kVA							

MR 415 H24 - 60 Hz										ch - PS hp	kW		
▲ ▼	215 LBR 120	m/min	6,3/63	10/100	16/162	26/256	3,1/31	5/50	8/81	13/128	215	158	580 m
	L 580	t	12	7,3	4,3	2,35	24	15	8,9	5			
▶	150 VBR	tr/min U/min - rpm	1 min 16 s								148	108	
⊙	R - 10,5	m/min	0 → 0,8								2 x 7,2	2 x 5,3	
◀▶	Y 800 A	RT 584 A1 - 2V	16 - 32								8 x 8,4	8 x 6,2	
⬆	J 850 A	i											
◀▶	ZX 6830	RT 664 A2B - 2V	19 - 38								6 x 8,4	6 x 6,2	
CEI 38 IEC 38		480 V (+6% -10%)		kVA		350 kVA							

F	D	GB	E	I	P
Levage	Heben	Hoisting	Elevación	Sollevamento	Elevação
Relevage	Ausleger-Einziehen	Luffing	Elevación de flecha	Brandeggio	Inclinação da lança
Orientation	Schwenken	Slewing	Orientación	Rotazione	Rotação
Translation	Kranfahren	Travelling	Traslación	Traslazione	Tranlação

 Document commercial non contractuel. Pour toute information technique se référer à la notice correspondante. Unverbindliches Vertriebsdokument. Für technische Informationen, siehe die entsprechenden Anweisungen. This commercial document is not legally binding. For any technical information, please refer to the corresponding instructions. Documento commercial non contractual. Para cualquier información técnica, ver la noticia correspondiente. Documento commerciale non vincolante. Per tutte le informazioni tecniche fare riferimento al catalogo istruzioni. Documento comercial não contratual. Para qualquer informação técnica complementar consultar as respectivas instruções.



18, rue de Charbonnières - B.P.173
69132 ECULLY Cedex - France
Tél. : +33 (0) 4 72 18 20 20
Fax. : +33 (0) 4 72 18 20 00
www.manitowoccrane.com

Americas
Tel : +1 888 479 7278
Tel : +1 717 593 2000

Europe - Middle East - Africa
Tel : +33 (0) 4 72 81 50 00
Tel : +44 (0) 191 522 2000

Asia - Pacific
Tel : +65 6264 1188
Fax : +65 6862 4040

www.manitowoccrane.com

MR 415 H24
Code C-91985-99_Réf. 2003 49 MAE 5
Copyright.Reproduction interdite © POTAIN 2003

Realisation Sedoc